

PENN TOWNSHIP

Each township has six files containing six sections in each, and one file containing all 36 sections.

Penn01to06.pdf

Penn07to12.pdf

Penn13to18.pdf

Penn19to24.pdf

Penn25to30.pdf

Penn31to36.pdf

PennAll36.pdf

The points are listed starting with the point above the SE corner and continuing in a counter-clockwise rotation around the section. This normally begins with the East point, Northeast, then North, but may also include Witness Corners, and/or Meander Corners.

Definitions

Witness Corner: A witness corner “stands in” when the true corner cannot be monumented or occupied because of difficult terrain or obstruction of the corner sight. The witness corner must be on the section line and is usually 5 or 10 chains away from the true corner.

Meander Corner: The intersection of a township, range, or section line and the banks of a navigable stream or meandering body of water.

Certificate of Location of Government Corner

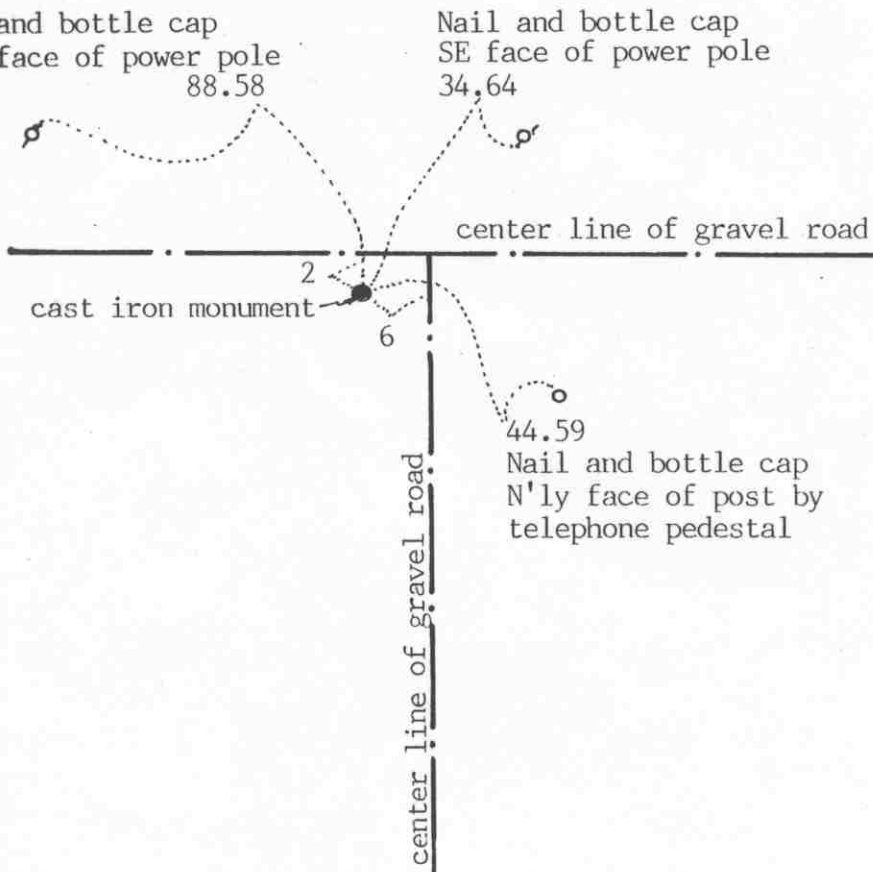


SKETCH OF REFERENCE TIES

(NO SCALE)

SECTION 1
T. 114, R. 29

SECTION 6
T. 114, R. 28



Statement of evidence relative to this corner location on sheet 2

I hereby certify that this document was prepared by me or under my direct supervision.

Willard Pellinen

Willard Pellinen
McLeod County Surveyor
License No. 9626

Date Sept. 28, 1991

OFFICE OF THE COUNTY RECORDER
MCLEOD COUNTY, MINNESOTA.

I hereby certify that this document was filed in this office at 1 o'clock P.M. on the 28th day of Oct, 1991.

Sarman Hotlie, County Recorder

By _____, Deputy

241581

Document No. _____

Certificate of Location of Government Corner

1855. John Ryan of the General Land Office set a post, deposited charcoal, dug pits and trench, built mound and planted osage orange seeds at the corners of the mound.

October 3, 1970. McCombs Knutson Associates (Dickman Knutson, county surveyor) dug for the corner, John Tupa from Hutchinson with a backhoe. They dug at the center line intersection of gravel roads. They dug a hole 5 feet by 15 feet by 4 feet deep. About 6 feet west of the intersection, down $3\frac{1}{2}$ feet they found a stone. They left the stone in place and took reference ties. Mr. Henry Herbst in the Southwest Quarter of Section 6 and Mr. Harold Lindemann, in the Southeast Quarter of Section 1, both agreed this was the quarter corner.

October 13, 1970. Knutson set a McLeod County cast iron monument and took additional ties.

June 20, 1990. We found the monument in good condition and took new reference ties.

We accept the stone found by Knutson as having perpetuated the correct location of the quarter corner. It fits the occupation lines, the center lines of the roads fairly well, and adjoining property owners agree it is the quarter corner.

NORTHEAST corner, Section 1, Township 114 North, Range 29 West

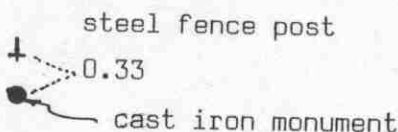
Certificate of Location of Government Corner

SKETCH OF REFERENCE TIES
(NO SCALE)



SECTION 36, T.115, R.29

SECTION 31, T.115, R.28



SECTION 1, T.114, R.29

SECTION 6, T.114, R.28

Statement of evidence relative to this corner location on sheet 2

I hereby certify that this document was prepared by me or under my direct supervision.

Willard Pellinen
Willard Pellinen
McLeod County Surveyor
License No. 9626

Date July 16, 1990

OFFICE OF THE COUNTY RECORDER
MCLEOD COUNTY, MINNESOTA.

I hereby certify that this document was filed in this office at 2 o'clock P.M. on the 23rd day of July, 1990.

Carmen Helie, County Recorder
By _____, Deputy
Document No. 234549

Certificate of Location of Government Corner

This corner was originally set by the government in 1855. John Ryan set a post, deposited charcoal, dug pits and trench, built mound and planged osage orange seeds at the corners of the mound.

1974. Delbert Rieke, Sibley County Surveyor, set a cast iron monument at the corner. He used lost methods to reestablish the corner.

June 2, 1989. We found the cast iron monument in good condition. Only 1 available tie, a steel fence post 0.33 feet north of the monument.

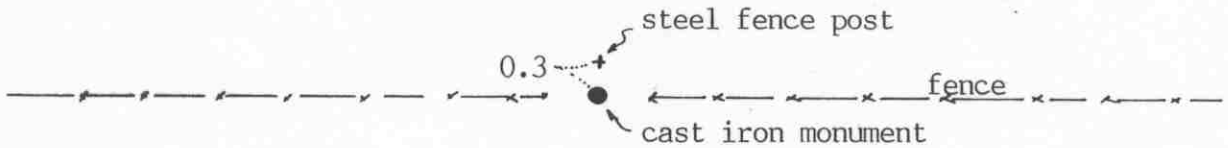
NORTH QUARTER corner, Section 1, Township 114 North, Range 29 West

Certificate of Location of Government Corner



SKETCH OF REFERENCE TIES
(NO SCALE)

SECTION 36 T. 115 R. 29



2644.97 feet to the NW corner of Section 1
2648.41 feet to the NE corner of Section 1

Angle from the NW cor to the NE cor on the north
side of the line is 180°07'13"

SECTION 1 T. 114 R. 29

Statement of evidence relative to this corner location on sheet 2

I hereby certify that this document
was prepared by me or under my
direct supervision.

Willard Pellinen

Willard Pellinen
McLeod County Surveyor
License No. 9626

Date August 22, 1991

OFFICE OF THE COUNTY RECORDER
MCLEOD COUNTY, MINNESOTA.

I hereby certify that this document was filed in this
office at 9 o'clock A.M. on the 26th day
of Aug 1991.

Carmen Ostlie, County Recorder

By _____, Deputy

Document No. 240528

NORTH QUARTER corner, Section 1, Township 114 North, Range 29 West

Certificate of Location of Government Corner

1855. John Ryan of the General Land Office set a post, deposited charcoal, dug pits and trench, built mound and planted osage orange seeds at the corners of the mound.

November 22, 1971. McCombs Knutson Associated (Dickman Knutson, county surveyor) found a $1\frac{1}{2}$ foot by 1 foot flat stone with a rotted wood stake below the stone. They moved the stone west and set a McLeod County cast iron monument in its place. They took available reference ties.

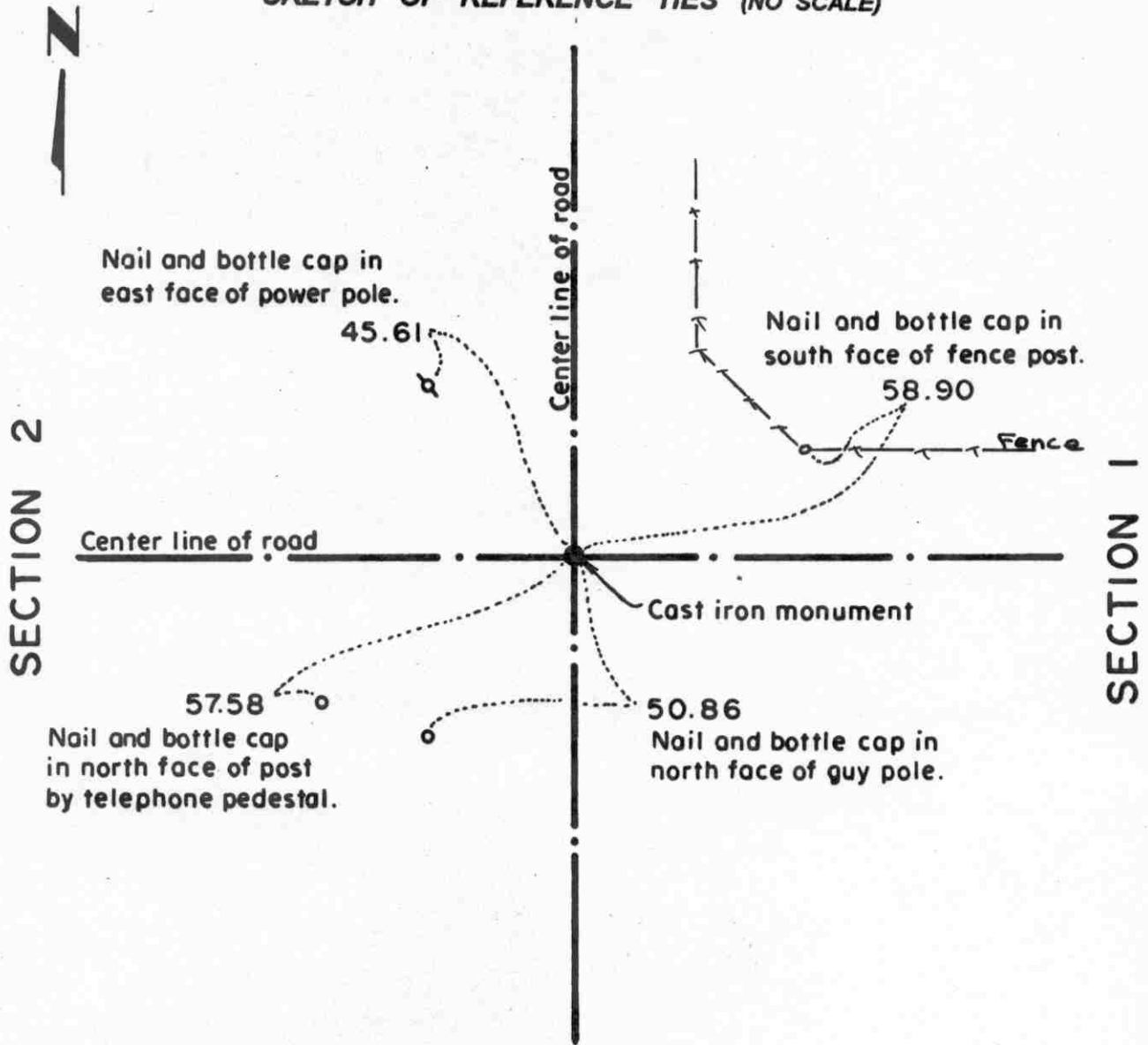
June 12, 1990. We found the monument in good condition and checked the ties.

We accept the stone and stake found by Knutson as having perpetuated the correct location of the quarter corner. This point is only 2.79 feet north and 1.72 feet west of being on line and split between the section corners.

Certificate of Location of Government Corner

East Quarter corner, Section 2, Township 114 North, Range 29 West

SKETCH OF REFERENCE TIES (NO SCALE)



Statement of evidence relative to this corner location on sheet 2

I hereby certify that this document was prepared by me or under my direct supervision.

Willard Pellinen
 Willard Pellinen
 McLeod County Surveyor
 License No. 9626.

Date June 9, 1995

**OFFICE OF THE COUNTY RECORDER
 MCLEOD COUNTY, MINNESOTA**

I hereby certify that this document was filed in this office at 2 o'clock P. M. on the 13th day of June 19 95.

CAROLYN OSTLIE BRADSHAW, MCLEOD COUNTY RECORDER

County Recorder

By Dhyllia Sopkowicz, Deputy.

Document No. 266244

Certificate of Location of Government Corner

East Quarter Corner, Section 2, Township 114 North, Range 29 West

July, 1855. A. H. Runyon of the General Land Office originally established this corner. He set a post, drove a charred stake, raised a mound of earth with trench and pits and planted maclura seeds at the southeast corner of the mound.

April 3, 1978. We found a spike down 1 foot below the surface of the road near the center line intersection of roads north, south, east and west. We took available reference ties.

June 9, 1981. We dug for the corner, John Tupa from Hutchinson with a backhoe. Down 1 1/2 feet below the road surface we found a stone, 12 inch diameter by 20 inches long, set on end. Below the stone we found 3 inch diameter wood post. We took available reference ties to the stone and wood post. The post was directly below the stone.

July 10, 1981. We set a McLeod County cast iron monument. This is about 16 feet north of a lost position for the corner.

March 27, 1995. We found the monument in good condition down 14 inches below the surface of the gravel road and took new reference ties.

NORTHEAST corner, Section 2, Township 114 North, Range 29 West

Certificate of Location of Government Corner

SKETCH OF REFERENCE TIES
(NO SCALE)



SECTION 35
T 115, R 29

SECTION 36
T 115, R 29

Nail and bottle cap
West face of power
pole. 157.18

field line

cast iron monument

fence

Nail and bottle cap
East face of power
pole. 192.18

40.00
Iron pipe on south line of
Section 36

center line of gravel road

SECTION 2
T 114, R 29

SECTION 1
T 114, R 29

Statement of evidence relative to this corner location on sheet 2

I hereby certify that this document was prepared by me or under my direct supervision.

Willard Pellinen

Willard Pellinen
McLeod County Surveyor
License No. 9626

Date August 22, 1991

OFFICE OF THE COUNTY RECORDER
MCLEOD COUNTY, MINNESOTA.

I hereby certify that this document was filed in this office at 9 o'clock A.M. on the 27th day of August, 1991.

Carmen Ostlie, County Recorder

By _____, Deputy

Document No. 240559

NORTHEAST _____ corner, Section 2, Township 114 North, Range 29 West

Certificate of Location of Government Corner

July, 1855. John Ryan of the General Land Office set a post at the corner, deposited charcoal, dug pits and trench, built mound and planted osage orange seeds at the corners of the mound.

October 20, 1970. McCombs Knutson Associated (Dickman Knutson, county surveyor) dug for the corner. They found an iron pipe at the center line of the north-south road in line with a fence to the east. Knutson set a McLeod County cast iron monument and took available ties.

November 16, 1979. We found the top of the cast iron monument had been broken off. We found the bottom of the monument down 16 inches below the surface and set a new monument over it and took new reference ties.

July 6, 1982. We found the monument in good condition and the reference ties ok.

June 13, 1990. We found the monument in good condition down 5 inches below the surface. Old ties all destroyed so we took new available reference ties.

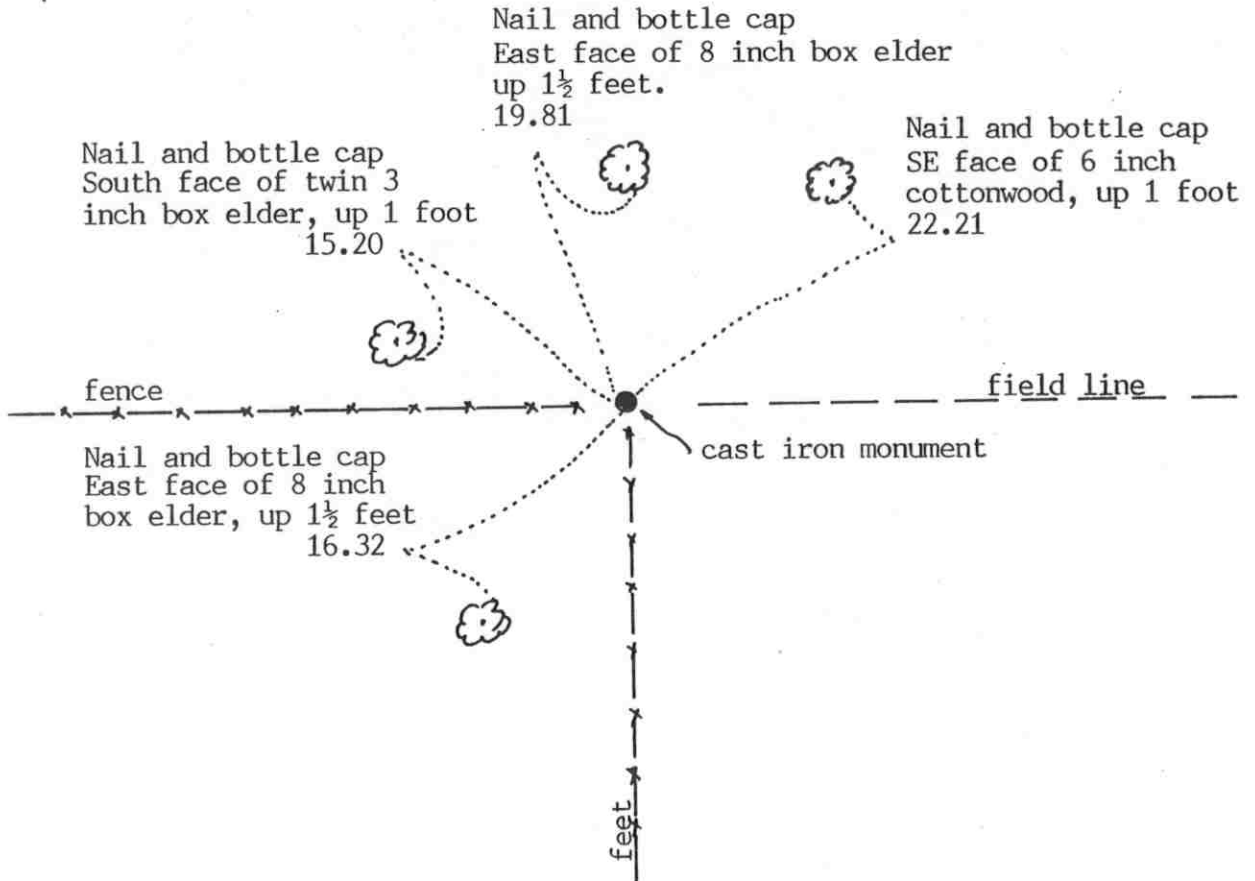
We accept the iron pipe found by Knutson and later the cast iron monument as having perpetuated the correct location of the section corner.

Certificate of Location of Government Corner

North Quarter corner, Section 2, Township 114 North, Range 29 West

SKETCH OF REFERENCE TIES (NO SCALE)

SECTION 35 T. 115 R. 29



SECTION 2 T. 114 R. 29

Statement of evidence relative to this corner location on sheet 2

I hereby certify that this document was prepared by me or under my direct supervision.

Willard Pellinen
 Willard Pellinen
 McLeod County Surveyor
 License No. 9626.

Date Aug 3, 1994

**OFFICE OF THE COUNTY RECORDER
 MCLEOD COUNTY, MINNESOTA**

I hereby certify that this document was filed in this office at 9 o'clock A.M. on the 19th day of August 1994.

Carmen Estelle Mulder, County Recorder

By _____, Deputy.

Document No. 261385

Certificate of Location of Government Corner

NORTH QUARTER corner, Section 2, Township 114 North, Range 29 West

1855. John Ryan of the General Land Office set a post, deposited charcoal, dug pits and trench, built mound and planted osage orange seeds at the corners of the mound.

September 22, 1970. Dickman Knutson, county surveyor, measured the north line of Section 2 and set a temporary quarter at a fence intersection, fences east-west and south. Adjoining property owners agree this is the quarter corner.

November 4, 1970. Knutson set a McLeod County cast iron monument at the corner.

This corner falls 5.95 feet west and 4.07 feet south of a lost corner position.

April 5, 1994. We found the monument in good condition but no old reference ties remaining. We took new available ties.

The monument set by Knutson is accepted as marking the correct location of the quarter corner. It fits long standing occupation lines and is very close to being at the lost position for the corner.

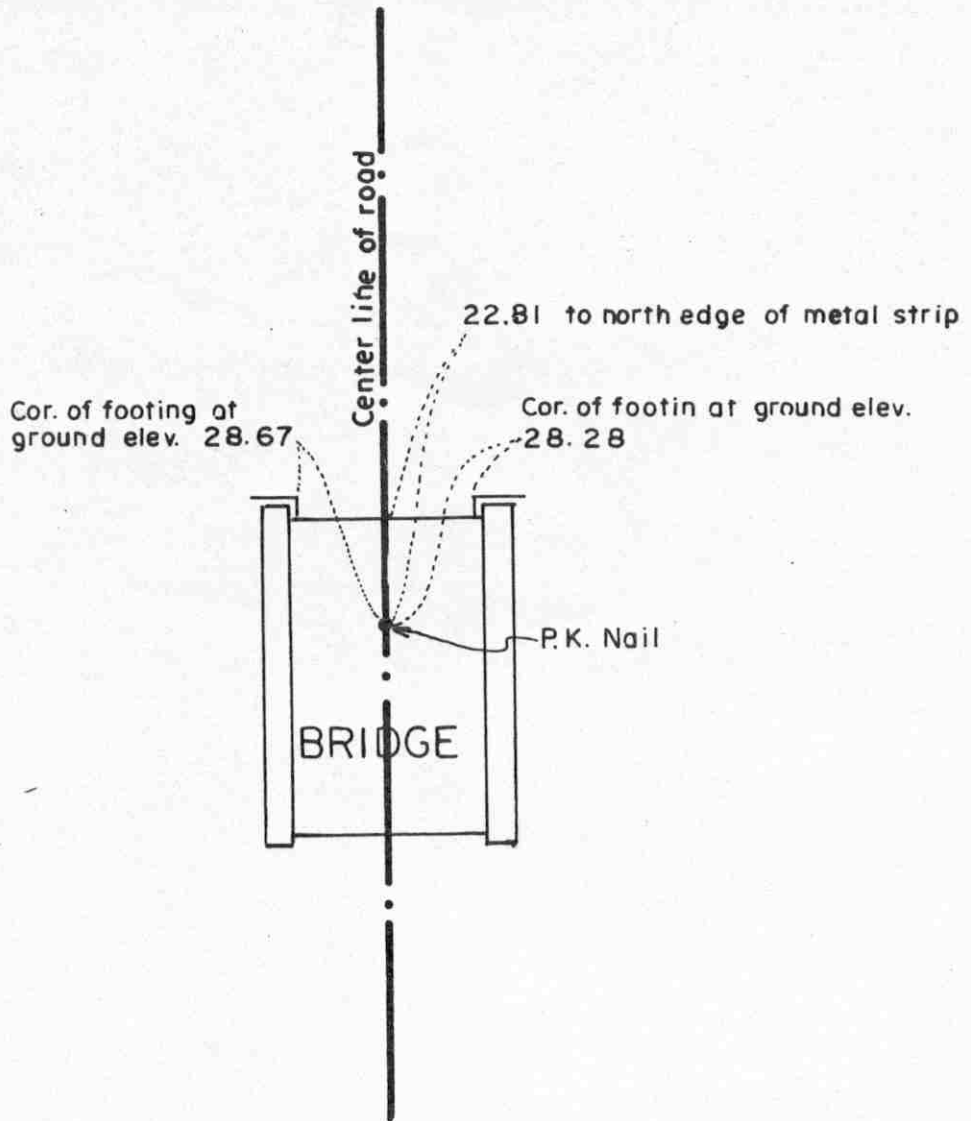
Certificate of Location of Government Corner

East Quarter corner, Section 3, Township 114 North, Range 29 West

SKETCH OF REFERENCE TIES (NO SCALE)

SECTION 3

SECTION 2



Statement of evidence relative to this corner location on sheet 2

I hereby certify that this document was prepared by me or under my direct supervision.

Willard Pellinen
Willard Pellinen
McLeod County Surveyor
License No. 9626.

Date Dec. 22, 1995

OFFICE OF THE COUNTY RECORDER
MCLEOD COUNTY, MINNESOTA

I hereby certify that this document was filed in this office at 9 o'clock A.M. on the 9th day of January 19 96.

Carmen Ostlie Mulder, County Recorder

By Charleen Engelman, Deputy.

Document No. 270172

Certificate of Location of Government Corner

East Quarter Corner, Section 3, Township 114 North, Range 29 West

July, 1855. A. H. Runyon of the General Land Office originally established this corner. He set a post, drove a charred stake, raised a mound of earth with trench and pits and planted maclura seeds at the southeast corner of the mound.

December 13, 1978. Mr. David Schuch, 27 years old and had lived in the Southwest Quarter of Section 2 all his life, said the fence running west has been accepted by adjoining property owners as being along the east-west quarter line of Section 3.

June 9, 1981. We excavated for the corner, John Tupa from Hutchinson with a backhoe. We found no evidence of the government corner.

January 17, 1983. Mr. Arthur Lindeman, in the Northeast Quarter of Section 3 agrees with Mr. Schuch. He said the easterly end fence post is in the original location and old posts along the fence are also in the original locations.

April 1, 1983. We set a spike in the center line of the north-south road in line with the fence and took available reference ties.

April 7, 1983. We set a McLeod County cast iron monument.

November 22, 1995. The corner has been destroyed and a new bridge has been built over rerouted creek. We set a PK Nail at the location of the cast iron monument. This now falls in the new bridge. We took new reference ties.

NORTHEAST corner, Section 3, Township 114 North, Range 29 West

Certificate of Location of Government Corner

SKETCH OF REFERENCE TIES
(NO SCALE)



SECTION 34
T. 115 R. 29

SECTION 35
T. 115 R. 29

NE corner of steel beam
50.88

Steel post
Sign post
56.60

NE corner of steel beam
58.53

cast iron monument

center line of road

SECTION 3
T. 114 R. 29

SECTION 2
T. 114 R. 29

Statement of evidence relative to this corner location on sheet 2

I hereby certify that this document was prepared by me or under my direct supervision.

Willard Pellinen

Willard Pellinen
McLeod County Surveyor
License No. 9626

Date June 29, 1994.

OFFICE OF THE COUNTY RECORDER
MCLEOD COUNTY, MINNESOTA.

I hereby certify that this document was filed in this office at 9 o'clock A. M. on the 26th day of July, 19 94.

CARMEN OSTLIE MULD-R, MCLEOD COUNTY RECORDER, County Recorder

By Dyllis Sophowick, Deputy

Document No. 260919

Certificate of Location of Government Corner

1855. John Ryan of the General Land Office established this corner. He set a post, deposited charcoal, dug pits and trench, built mound and planted osage orange seeds at the corners of the mound.

October 3, 1970. Dickman Knutson, county surveyor, dug for the corner, John Tupa from Hutchinson with a backhoe.

They found a large rock with a sharp point up.

October 13, 1970. Knutson replaced the rock with a McLeod County cast iron monument and took available reference ties.

March 3, 1994. We found the monument in good condition and checked the ties.

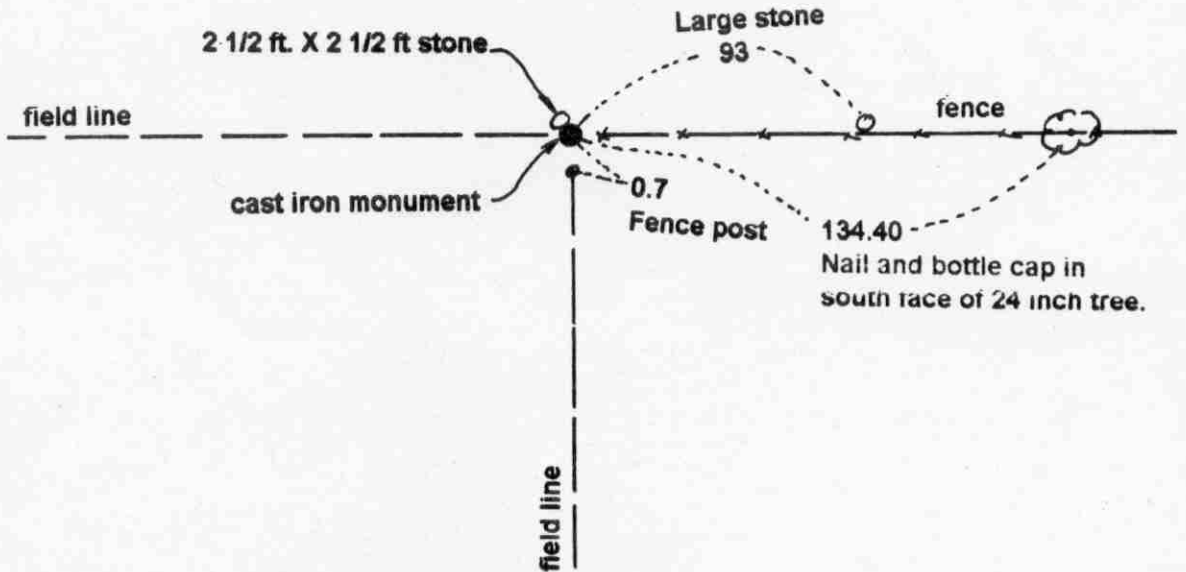
Certificate of Location of Government Corner

North Quarter corner, Section 3, Township 114 North, Range 29 West

SKETCH OF REFERENCE TIES (NO SCALE)



SECTION 34 T. 115 R. 29



SECTION 3, T. 114 R. 29

Statement of evidence relative to this corner location on sheet 2

I hereby certify that this document was prepared by me or under my direct supervision.

Willard Pellinen
Willard Pellinen
McLeod County Surveyor
License No. 9626.

Date Sept. 7, 1995

OFFICE OF THE COUNTY RECORDER MCLEOD COUNTY, MINNESOTA

I hereby certify that this document was filed in this office at 9 o'clock A. M. on the 14th day of September 19 95.

Carmen Estlin Gulder, County Recorder

By _____, Deputy.

Document No. 268016

Certificate of Location of Government Corner

North Quarter Corner, Section 3, Township 114 North, Range 29 West

1855. John Ryan of the General Land Office established this corner. He set a post, deposited charcoal, dug pits and trench, built mound and planted osage orange seeds at the corners of the mound.

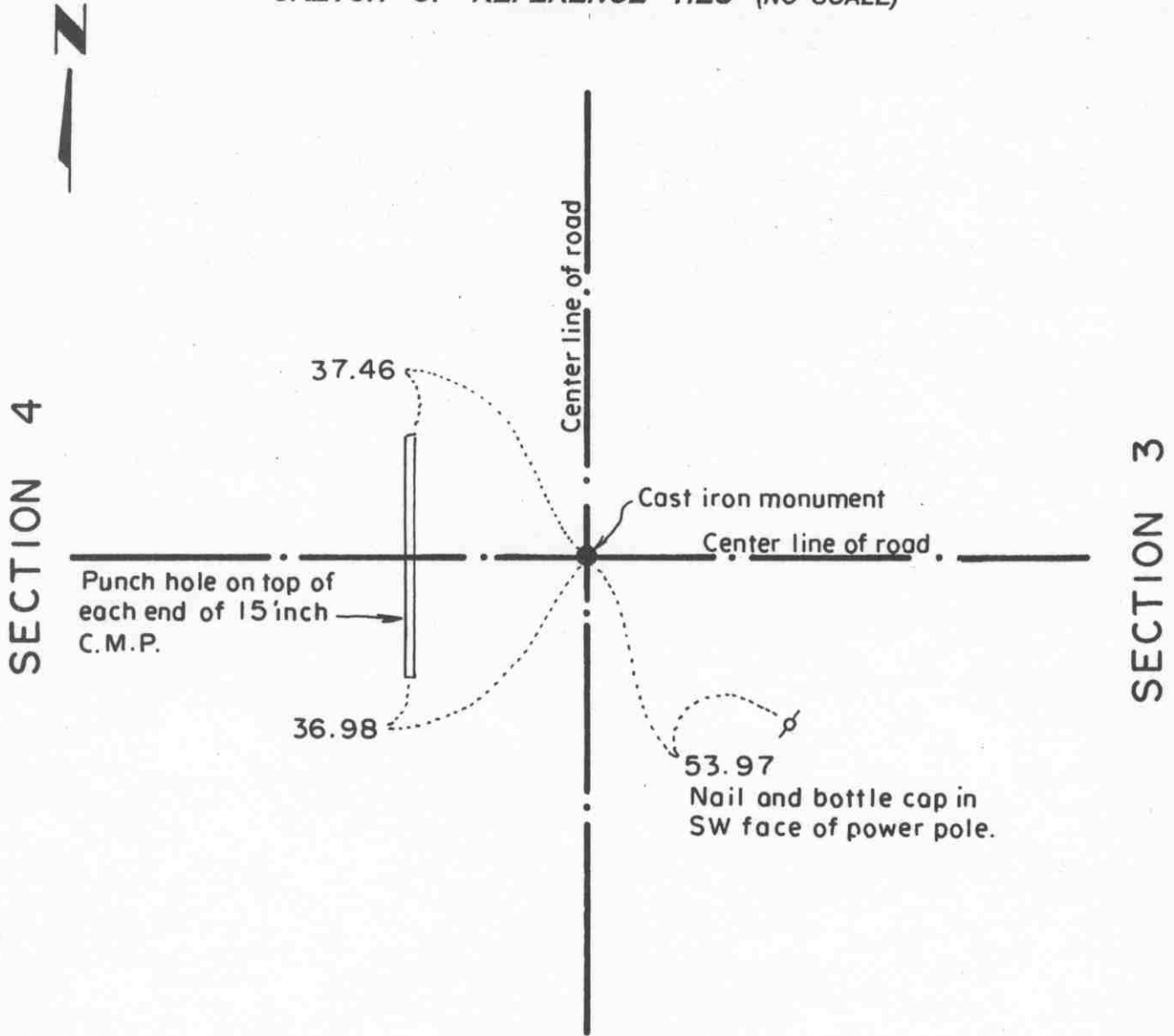
1970. Dickman Knutson, county surveyor, found a 2 foot by 2 1/2 foot stone at the intersection of field lines east, west and south. Knutson moved the stone, set a McLeod County cast iron monument and took available reference ties. Adjoining property owners have accepted this location as marking the quarter corner.

April 10, 1995. We found the monument in good condition and took new reference ties.

Certificate of Location of Government Corner

East Quarter corner, Section 4 , Township 114 North, Range 29 West

SKETCH OF REFERENCE TIES (NO SCALE)



Statement of evidence relative to this corner location on sheet 2

I hereby certify that this document was prepared by me or under my direct supervision.

Willard Pellinen
 Willard Pellinen
 McLeod County Surveyor
 License No. 9626.

Date Nov. 10, 1995

OFFICE OF THE COUNTY RECORDER
 MCLEOD COUNTY, MINNESOTA

I hereby certify that this document was filed in this office at 9 o'clock A. M. on the 15th day of November 19 95.

(Armen) (Dorlie) (Jelder), County Recorder

By _____, Deputy.

Document No. 269347

Certificate of Location of Government Corner

East Quarter Corner, Section 4, Township 114 North, Range 29 West

July, 1855. A. H. Runyon of the General Land Office originally established this corner. He set a post, drove a charred stake, raised a mound of earth with trench and pits and planted maclura seeds at the southeast corner of the mound.

December 13, 1978. Marlan Radke, 44 years old and had lived in the Southwest Quarter of Section 3 for 15 years, said the center line intersection of the roads have been accepted by adjoining property owners as being the quarter corner.

March, 1979. We found an iron pin down 1 1/2 feet below the surface of the road and took available ties.

July, 1979. We dug below the iron pin, John Tupa from Hutchinson with a backhoe, but didn't find anything else.

March 28, 1983. We measured the east line of Section 4 and found the corner to be within 3 1/2 feet of being on a proration of government distances between the section corners.

June 10, 1983. We set a McLeod County cast iron monument.

February 22, 1995. We checked the reference ties.

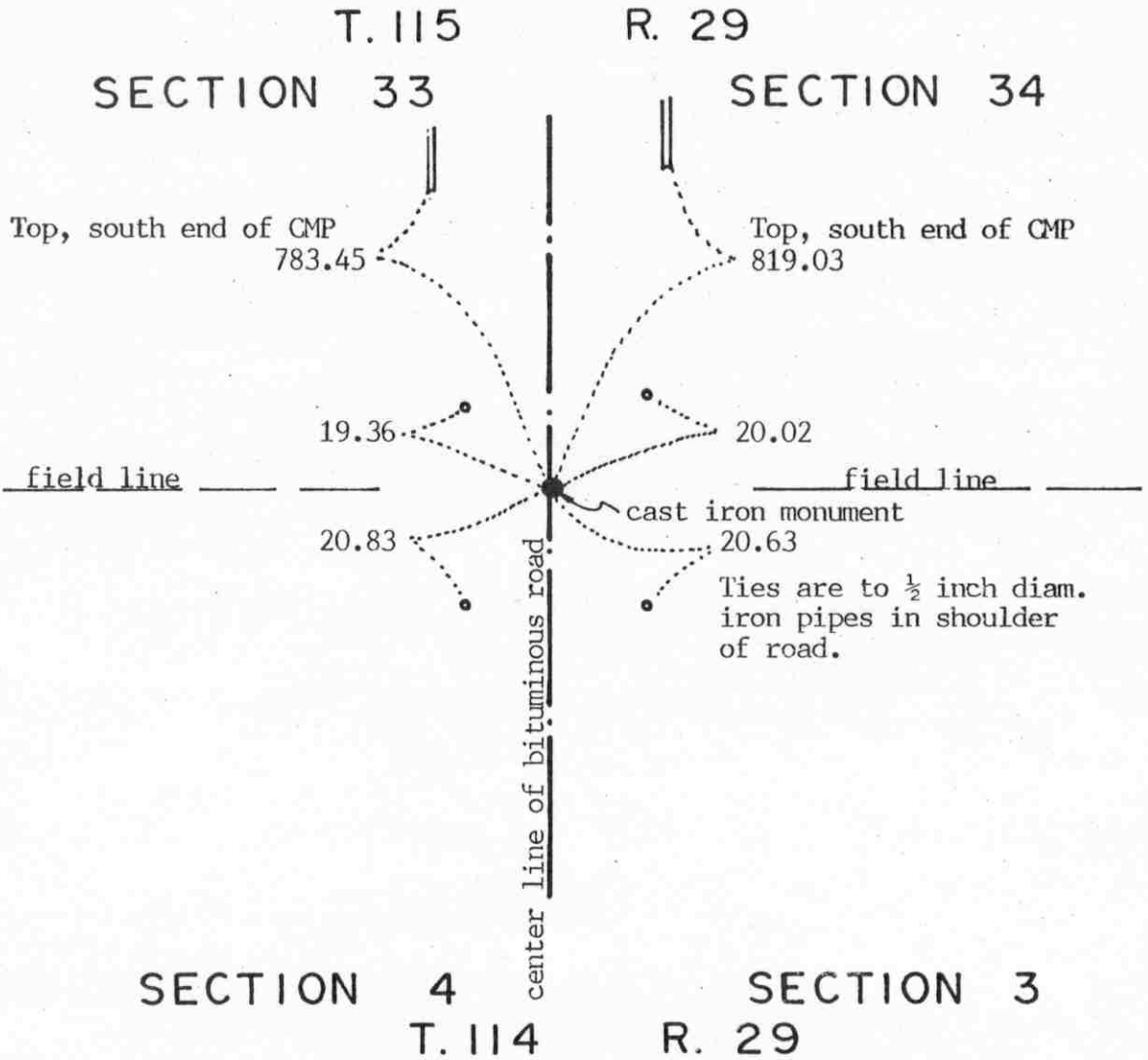
NORTHEAST corner, Section 4, Township 114 North, Range 29 West

Certificate of Location of Government Corner



SKETCH OF REFERENCE TIES

(NO SCALE)



Statement of evidence relative to this corner location on sheet 2

I hereby certify that this document was prepared by me or under my direct supervision.

Willard Pellinen

Willard Pellinen
McLeod County Surveyor
License No. 9626

Date July 25, 1994

OFFICE OF THE COUNTY RECORDER
MCLEOD COUNTY, MINNESOTA.

I hereby certify that this document was filed in this office at 9 o'clock A.M. on the 16th day of August, 1994.

Carmon Estlin Mulder County Recorder

By _____, Deputy

Document No. 261289

Certificate of Location of Government Corner

1855. John Ryan of the General Land Office established this corner. He set a post, deposited charcoal, dug pits and trench, built a mound of earth and planted osage orange seeds at the corners of the mound.

1970. Dickman Knutson, county surveyor, dug for the corner at the center line of the north-south road in line with a fence to the east. Adjoining property owners say this is the section corner and that there is a stone there. John Tupa from Hutchinson dug with a backhoe. They found a stone down 3 feet and took available reference ties.

November 3, 1970. Knutson set a McLeod County cast iron monument at the corner.

March 3, 1994. We found the monument in good condition down 6 inches below the surface of the road and took new reference ties.

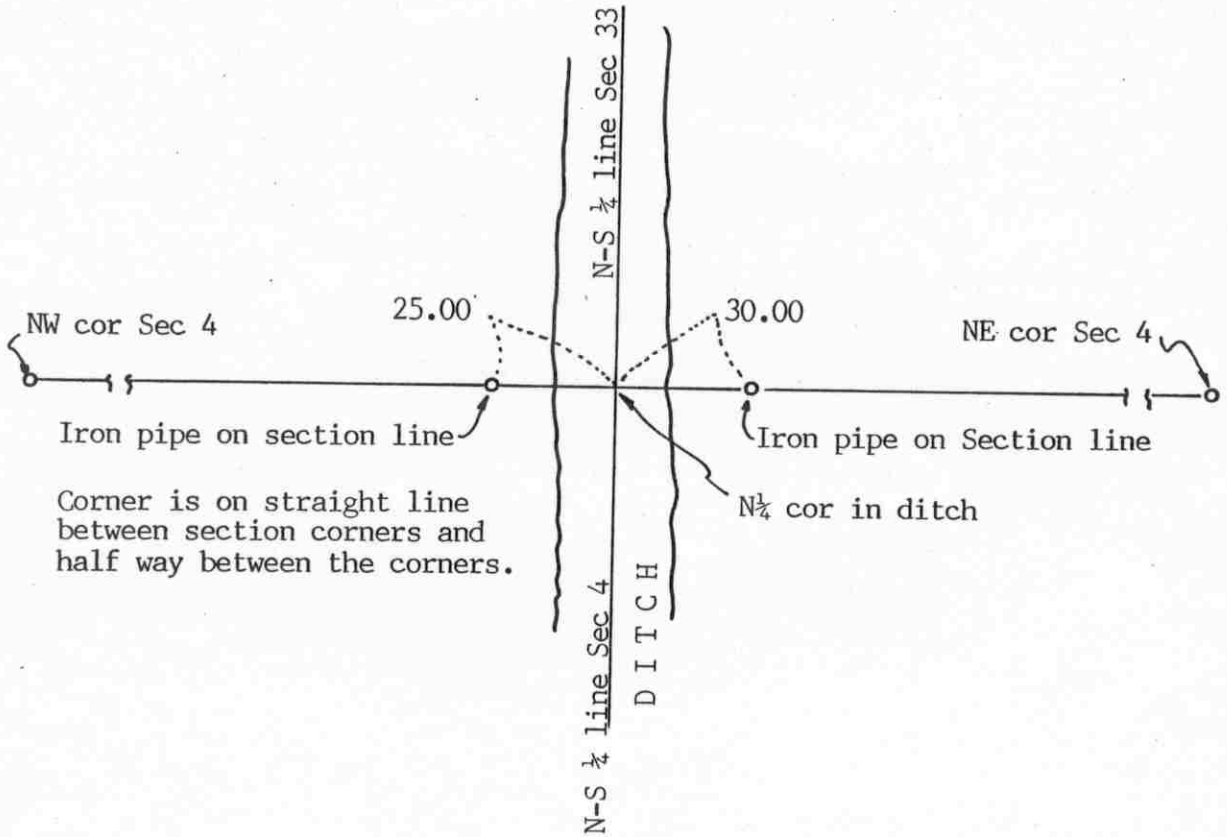
The monument set by Knutson is accepted as marking the section corner. It fits long standing occupation lines, the center line of the road and the fence to the east, and it perpetuates the location of an older monument, the stone.

Certificate of Location of Government Corner

SKETCH OF REFERENCE TIES

(NO SCALE)

SECTION 33 T.115 R. 29



SECTION 4, T. 114, R. 29

Statement of evidence relative to this corner location on sheet 2

I hereby certify that this document was prepared by me or under my direct supervision.

Willard Pellinen

Willard Pellinen
McLeod County Surveyor
License No. 9626

Date July 18, 1994.

OFFICE OF THE COUNTY RECORDER
MCLEOD COUNTY, MINNESOTA.

I hereby certify that this document was filed in this office at 9 o'clock A. M. on the 26th day of July, 19 94.

GARMEN OSTLIE MILDRE, MCLEOD COUNTY RECORDER

, County Recorder
By Phyllis Sopkowiak, Deputy

Document No. 260920

NORTH QUARTER corner, Section 4, Township 114 North, Range 29 West

Certificate of Location of Government Corner

1855. John Ryan of the General Land Office first established this corner. He set a post for a witness corner 250.8 feet west of the true corner and deposited charcoal and dug a pit 8 links west and built mound. Corner fell in a pond.

September, 1970. August Kohls, 60 + years old, in the area for 35 years and Victor Schrupp, 57 years old and 36 years in the area, both stated the quarter corner is in the north-south ditch.

November, 1970. Dickman Knutson, county surveyor, found a wood stake on the west bank of the ditch, on line and half way between the section corners. Stake was not original government corner. Original corner was not set. The stake had to be set after the ditch was built. No information found as to who set the stake. Knutson replaced the stake with a McLeod County cast iron monument and took available reference ties.

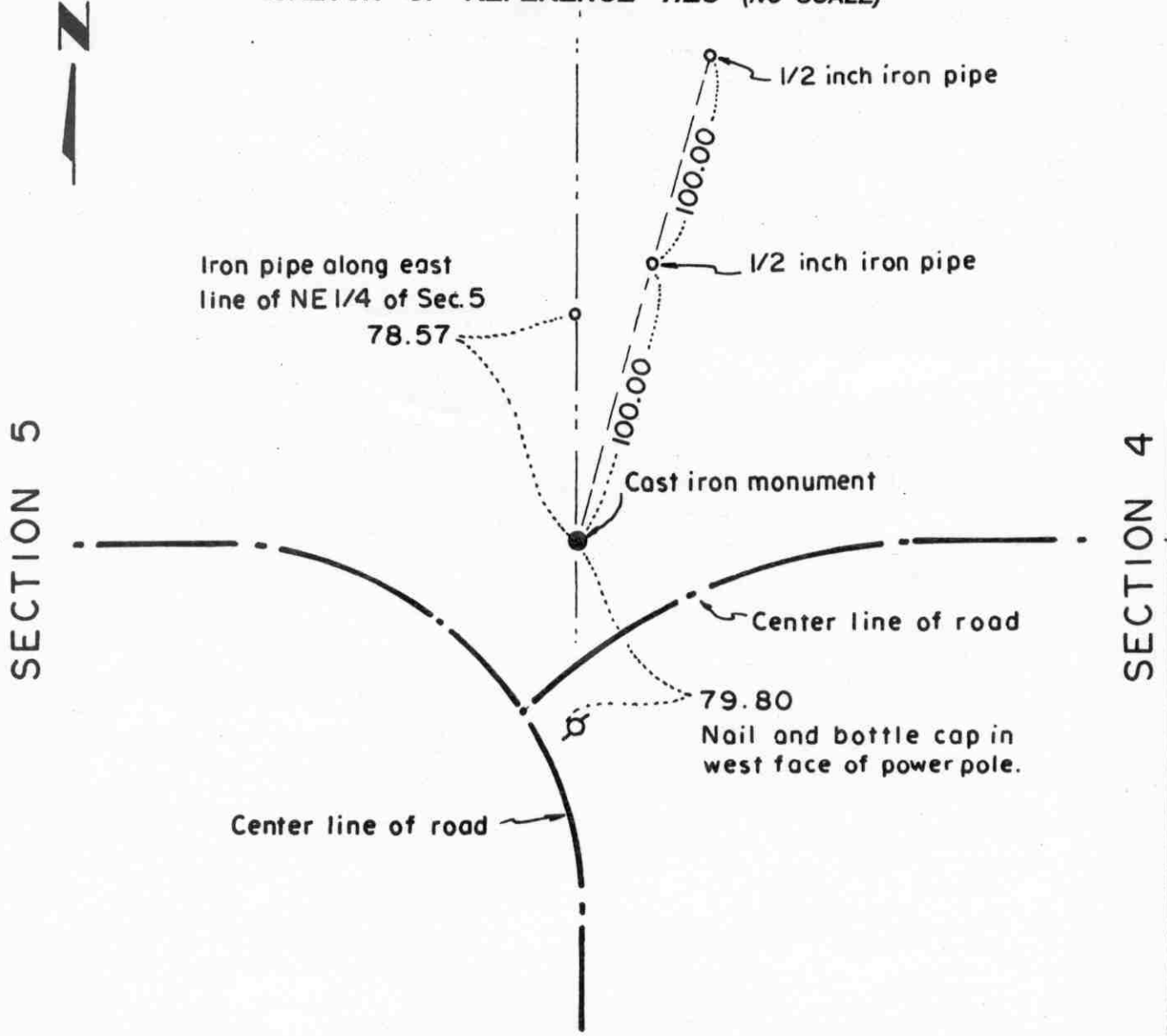
September 17, 1986. Ditch had been improved and the monument destroyed. We set an iron pipe 25.00 feet west and an iron pipe 30 feet east of the corner location. (along the section line)

March 25, 1994. We found the iron pipes in place.

Certificate of Location of Government Corner

East Quarter corner, Section 5, Township 114 North, Range 29 West

SKETCH OF REFERENCE TIES (NO SCALE)



Statement of evidence relative to this corner location on sheet 2

I hereby certify that this document was prepared by me or under my direct supervision.

Willard Pellinen
 Willard Pellinen
 McLeod County Surveyor
 License No. 9626.

Date June 9, 1995

**OFFICE OF THE COUNTY RECORDER
 MCLEOD COUNTY, MINNESOTA**

I hereby certify that this document was filed in this office at 2 o'clock P.M. on the 13th day of June 19 95.

CARMEL OSILE MULLER, MCLEOD COUNTY RECORDER, County Recorder

By Phyllis Sopkowiak, Deputy.

Document No. 266245

Certificate of Location of Government Corner

East Quarter Corner, Section 5, Township 114 North, Range 29 West

July, 1855. A. H. Runyon of the General Land Office originally established this corner. He set a post, drove a charred stake, raised a mound of earth with trench and pits and planted maclura seeds at the southeast corner of the mound.

1938. County Highway Engineer field notes show a stone at the corner.

November 16, 1970. Dickman Knutson, county surveyor, excavated for the corner at the center line intersection of roads east, west and south, John Tupa from Hutchinson with a backhoe. They found a flat stone with a wood stake on top. Stone was down 3 feet below the surface of the road. They took ties to the stone, and set a McLeod County cast iron monument over the stone.

June 12, 1984. We took new ties to the corner. Corner will be destroyed by road construction.

July 10, 1985. We reset a McLeod County cast iron monument at the corner and took additional ties.

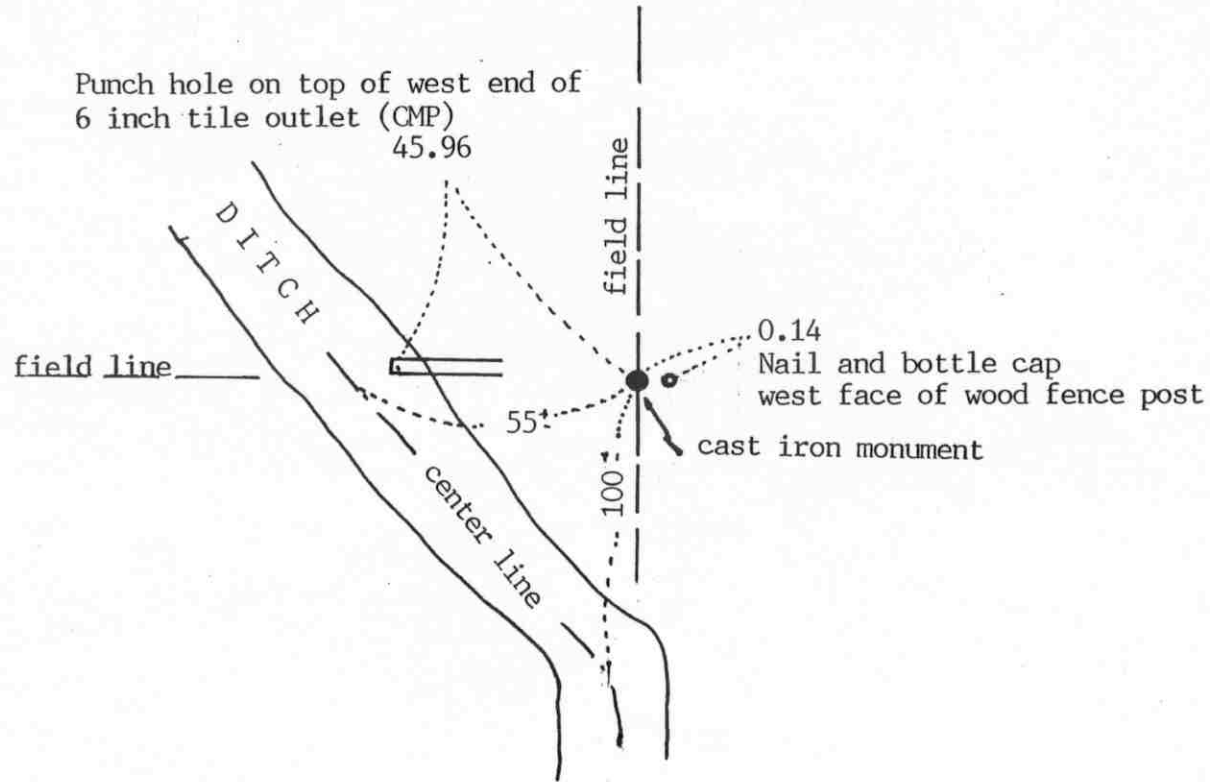
February 21, 1995. We checked the reference ties.

NORTHEAST corner, Section 5, Township 114 North, Range 29 West

Certificate of Location of Government Corner

SKETCH OF REFERENCE TIES
(NO SCALE)

SECTION 32 SECTION 33
T. 115 R. 29



SECTION 5 SECTION 4
T. 114 R. 29

Statement of evidence relative to this corner location on sheet 2

I hereby certify that this document was prepared by me or under my direct supervision.

Willard Pellinen
Willard Pellinen
McLeod County Surveyor
License No. 9626

Date July 11, 1994

OFFICE OF THE COUNTY RECORDER
MCLEOD COUNTY, MINNESOTA.

I hereby certify that this document was filed in this office at 9 o'clock A. M. on the 26th day of July, 1994.

CARMEN OSTLIE MILDORF, MCLEOD COUNTY RECORDER, County Recorder

By Phyllis Sopkowicz, Deputy

Document No. 260921

Certificate of Location of Government Corner

1855. John Ryan of the General Land Office set a witness corner 2.40 chains (158.40 feet east of the section corner which fell in a marsh. He set a post, deposited charcoal, dug a pit 8 links east and built a mound.

November, 1970. Henry Krohn, 60 plus years old and had lived in the area for 35 years said adjoining property owners agree the section corner is in line with a fence to the west and 2 feet west of the fence running north. Dickman Knutson, county surveyor, set a McLeod County cast iron monument at this location and took available reference ties.

August 9, 1982. We found the monument and took additional ties. Corner might possibly be destroyed by new ditch construction.

March 25, 1994. We found the monument in good condition. Ditch construction was to the west and south of the corner. We checked the reference ties.

NORTH QUARTER corner, Section 5, Township 114 North, Range 29 West

Certificate of Location of Government Corner

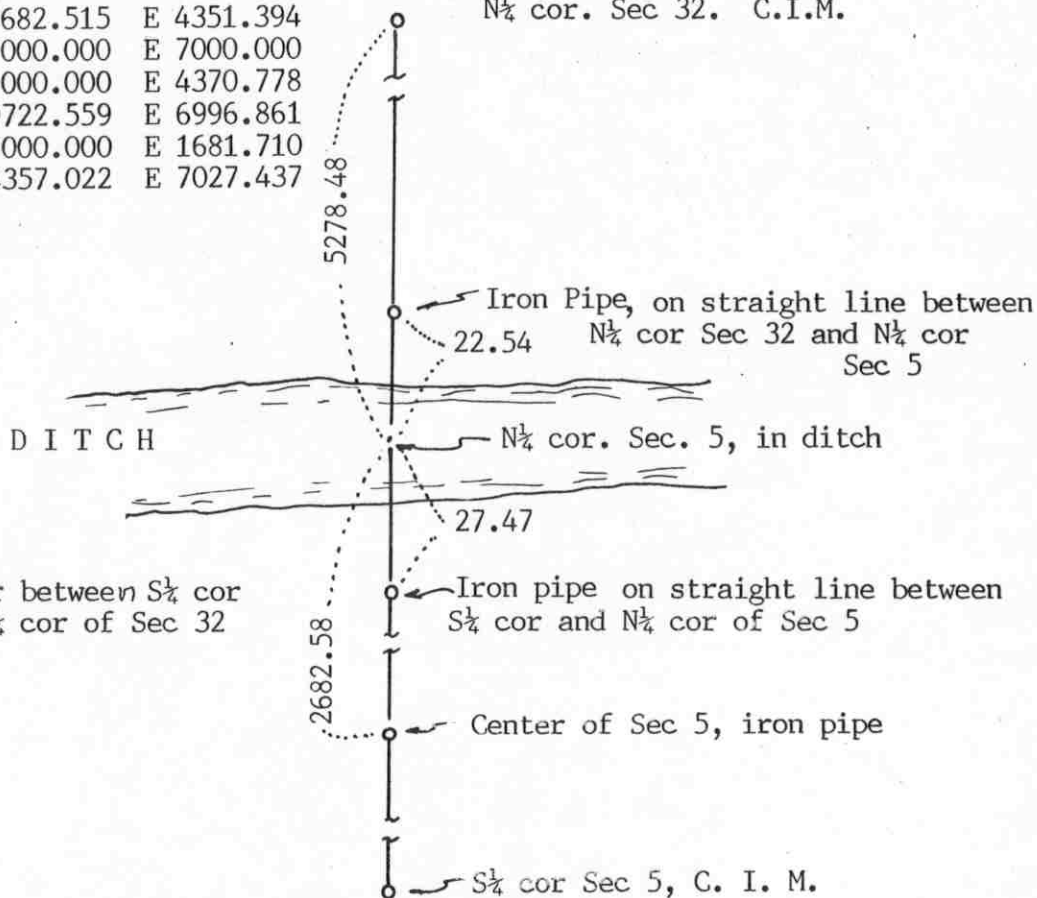
SKETCH OF REFERENCE TIES
(NO SCALE)

SECTION 32, T. 115 N., R. 29 W.

COORDINATES

N $\frac{1}{4}$ cor Sec 5.	N 9682.515	E 4351.394
E $\frac{1}{4}$ cor Sec 5.	N 7000.000	E 7000.000
Center Sec 5.	N 7000.000	E 4370.778
NE cor Sec 5.	N 9722.559	E 6996.861
W $\frac{1}{4}$ cor Sec 5.	N 7000.000	E 1681.710
SE cor Sec 5.	N 4357.022	E 7027.437

N $\frac{1}{4}$ cor. Sec 32. C.I.M.



Angle at N $\frac{1}{4}$ cor between S $\frac{1}{2}$ cor of Sec 5 and N $\frac{1}{4}$ cor of Sec 32 not known

SECTION 5, T. 114 N., R. 29 W.

Statement of evidence relative to this corner location on sheet 2

I hereby certify that this document was prepared by me or under my direct supervision.

Willard Pellinen
Willard Pellinen
McLeod County Surveyor
License No. 9626

Date July 18, 1994

OFFICE OF THE COUNTY RECORDER
MCLEOD COUNTY, MINNESOTA.

I hereby certify that this document was filed in this office at 9 o'clock A. M. on the 26th day of July, 1994.

CARMEN OSTLIE MULLER, MCLEOD COUNTY RECORDER, County Recorder

By Shyllis Sankowich, Deputy

Document No. 260922

Certificate of Location of Government Corner

1855. John Ryan of the General Land Office first established this corner. He set a post, deposited charcoal, dug pits and trench, built a mound and planted osage orange seeds at the corners of the mound.

1949. Fred Koenig, surveyor (not registered) found an iron monument at the corner.

1968. Dickman Knutson, county surveyor, replaced a found iron monument with a McLeod County cast iron monument and took reference ties.

August 9, 1982. We found the monument and established coordinates for the quarter corner and some other government corners in Section 5. The quarter corner would be destroyed by ditch construction.

February 11, 1986. We reestablished the location of the quarter corner which now fell in the middle of the new ditch. We set an iron pipe 27.47 feet south of the north quarter corner along the north-south quarter line of Section 5.

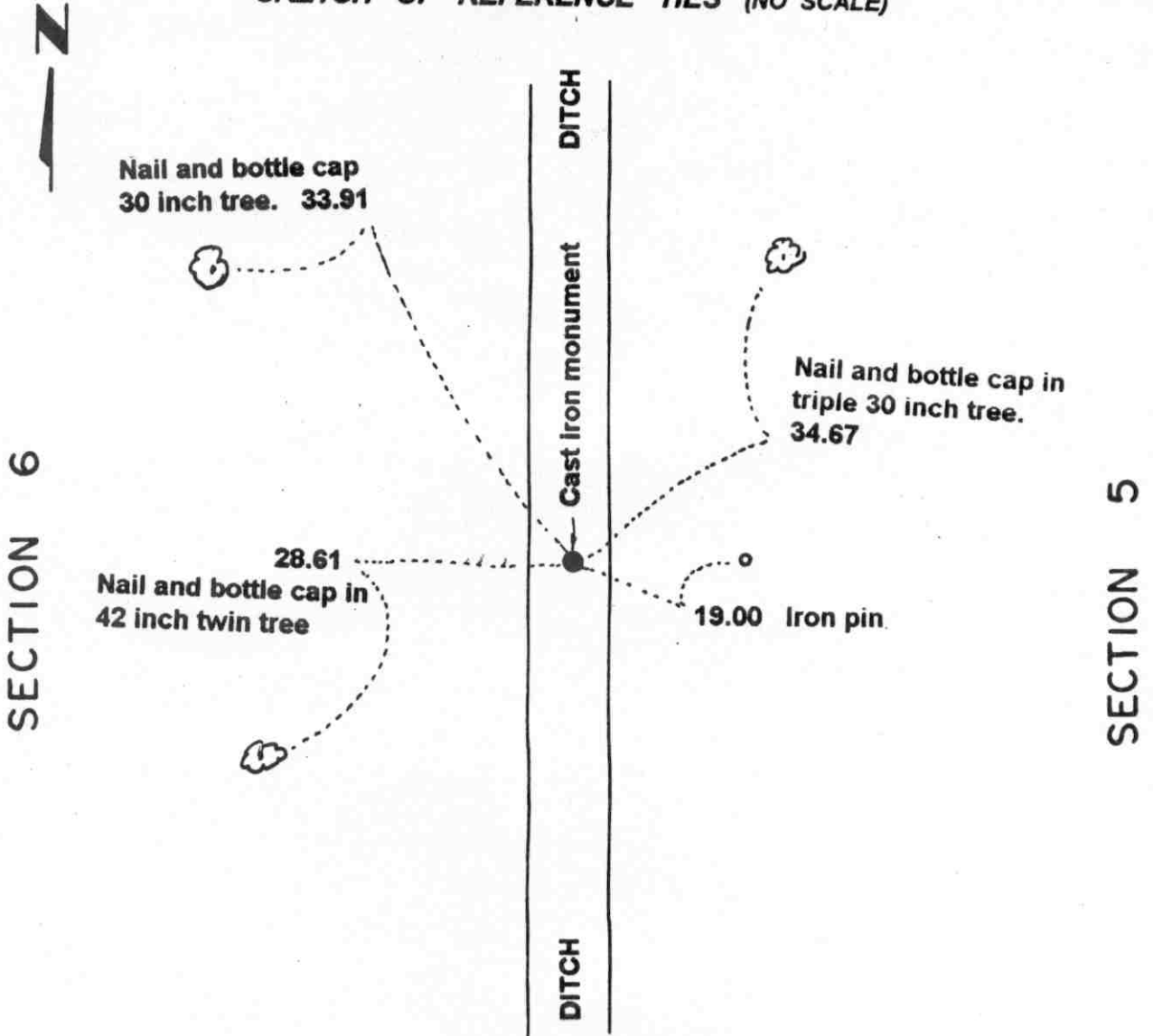
February 26, 1986. We set an iron pipe 22.54 feet north of the quarter corner along the north-south quarter line of Section 5.

March 25, 1994. We found the iron pipes 27.47 feet south and 22.54 feet north of the quarter corner which is in the middle of the east-west ditch.

Certificate of Location of Government Corner

EAST QUARTER corner, Section 6, Township 114 North, Range 29 West

SKETCH OF REFERENCE TIES (NO SCALE)



Statement of evidence relative to this corner location on sheet 2

I hereby certify that this document was prepared by me or under my direct supervision.

Willard Pellinen
Willard Pellinen
McLeod County Surveyor
License No. 9626.

Date Sept. 11, 1995

OFFICE OF THE COUNTY RECORDER MCLEOD COUNTY, MINNESOTA

I hereby certify that this document was filed in this office at 9 o'clock A. M. on the 14th day of Sept 19 95.

Carmen Holier Moulder, County Recorder

By _____, Deputy.

Document No. 268018

Certificate of Location of Government Corner
East Quarter Corner, Section 6, Township 114 North, Range 29 West

July , 1855. A. H. Runyon of the General Land Office established this corner. He set a post, drove a charred stake, raised a mound of earth with trench and pits and planted maclura seeds at the southeast corner of the mound.

1949. Survey notes by Fred Koenig, shows the corner to be in the center of the north-south ditch with an iron monument 19 feet east along the east-west quarter line of Section 5.

October 22, 1970. Dickman Knutson, county surveyor, found the iron monument set by Koenig and set a McLeod County cast iron monument 19 feet west and took available reference ties.

December 15, 1994. There being no evidence to the contrary, the monument set by Knutson is accepted as marking the location of the government corner.

Certificate of Location of Government Corner

Northeast corner, Section 6, Township 114 North, Range 29 West

SKETCH OF REFERENCE TIES (NO SCALE)

T. 115 N. R. 29 W.

SECTION 31

SECTION 32



Nail and bottle cap in north face of 20 inch box elder. 24.32

Cast iron monument

Fence

14.10
Nail and bottle cap in west face of box elder.

18.20
Nail and bottle cap in north face of box elder.

Fence

SECTION 6

SECTION 5

T. 114 N. R. 29 W.

Statement of evidence relative to this corner location on sheet 2

I hereby certify that this document was prepared by me or under my direct supervision.

Willard Pellinen
Willard Pellinen
McLeod County Surveyor
License No. 9626.

Date Sept. 11, 1995

OFFICE OF THE COUNTY RECORDER
MCLEOD COUNTY, MINNESOTA

I hereby certify that this document was filed in this office at 9 o'clock A. M. on the 14th day of Sept 19 95.

Carmen Ostlie Quider, County Recorder

By _____, Deputy.

Document No. 268017

Certificate of Location of Government Corner

Northeast Corner, Section 6, Township 114 North, Range 29 West

1855. John Ryan of the General Land Office established this corner. He set a post, dug pits and trench, built mound and planted osage orange seeds at the corners of the mound.

Old survey notes show an iron under a stone at the corner.

January 4, 1966. Roy Hansen, county surveyor, found an iron pipe at the corner.

1970. Dickman Knutson, county surveyor, replaced the iron pipe with a McLeod County cast iron monument and took available reference ties.

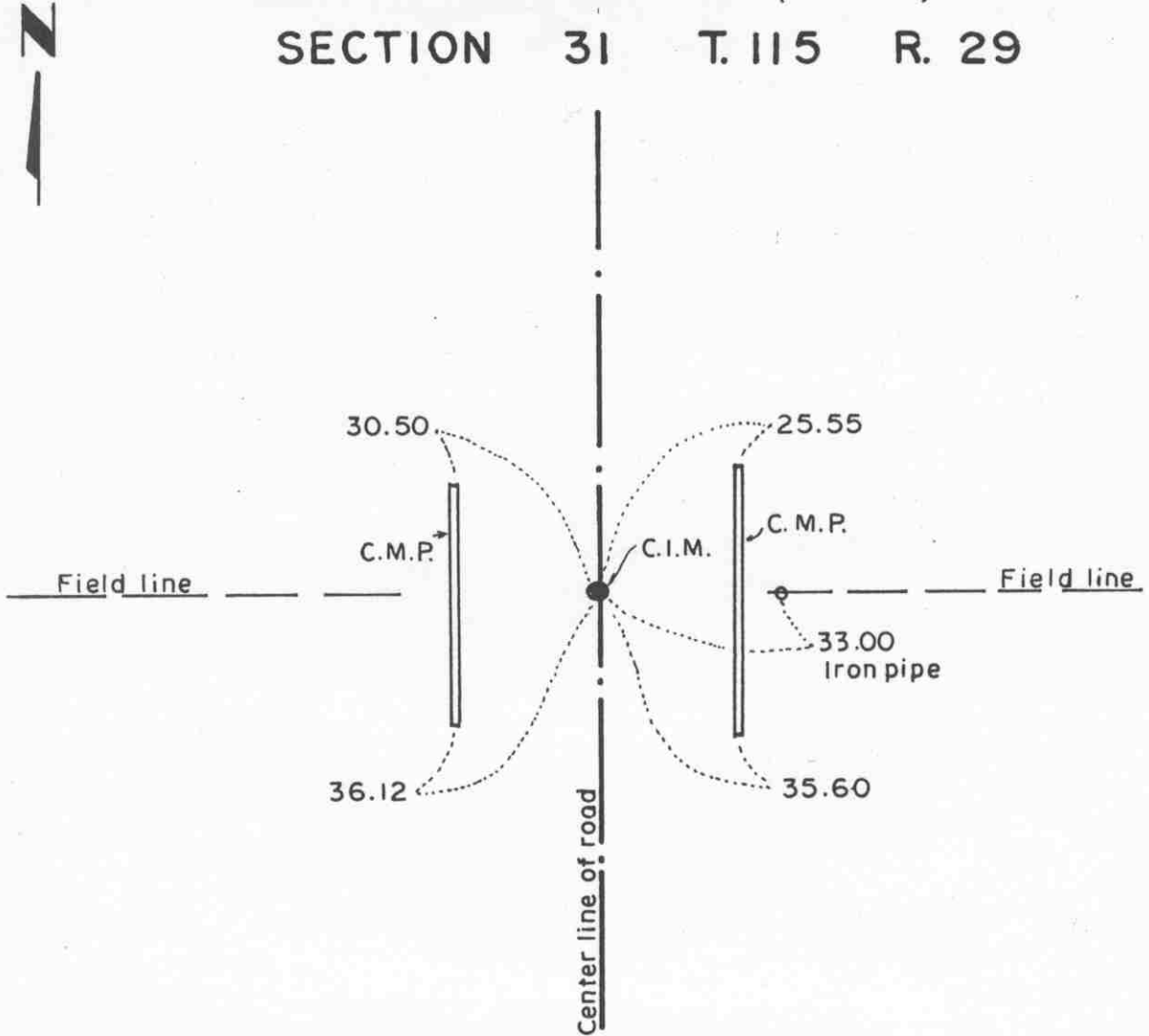
December 15, 1994. The monument set by Knutson is accepted as marking the correct location of the government corner. It fits long standing occupation lines and it perpetuates the location of an older monument.

Certificate of Location of Government Corner

North Quarter corner, Section 6, Township 114 North, Range 29 West

SKETCH OF REFERENCE TIES (NO SCALE)

SECTION 31 T. 115 R. 29



SECTION 6 T. 114 R. 29

Statement of evidence relative to this corner location on sheet 2

I hereby certify that this document was prepared by me or under my direct supervision.

Willard Pellinen
Willard Pellinen
McLeod County Surveyor
License No. 9626.

Date May 15, 1995

OFFICE OF THE COUNTY RECORDER
MCLEOD COUNTY, MINNESOTA

I hereby certify that this document was filed in this office at 9 o'clock A.M. on the 18th day of May 19 95.

Carmen (Dorlie) Mulder, County Recorder

By _____, Deputy.

Document No. 265795

Certificate of Location of Government Corner
North Quarter Corner, Section 6, Township 114 North, Range 29 West

1855. John Ryan of the General Land Office established this corner. He set a post, deposited charcoal, dug pits and trench, built mound and planted osage orange seeds at the corners of the mound.

1966. Roy Hansen, county surveyor, found a half inch diameter iron pipe in the center of the north-south road, in line with a field line to the east.

1970. Dickman Knutson, county surveyor, excavated for the corner, John Tupa from Hutchinson with a back hoe. Down 3 feet below the surface of the road he found a half inch diameter 18 inch long iron pipe. He took reference ties and dug a hole 8 feet by 4 feet by 4 feet deep but found no other evidence of the government corner. The found iron pipe was in the center line of the north-south road, in line with a field line to the east.

1974. Knutson set a McLeod County cast iron monument and took new ties.

1990. A Mn/Dot survey crew found the top of the monument was broken off but the base of the monument was ok. They set a 2 inch square telspar tube with a Mn/Dot cap at the center of the base of the broken cast iron monument. A 3/4 inch diameter by 24 inch long iron pin was set in the center of the tube.

CERTIFICATE OF LOCATION OF GOVERNMENT CORNER

Northeast Corner of Section 1, Township 114 N, Range 30 W, 5th P.M.

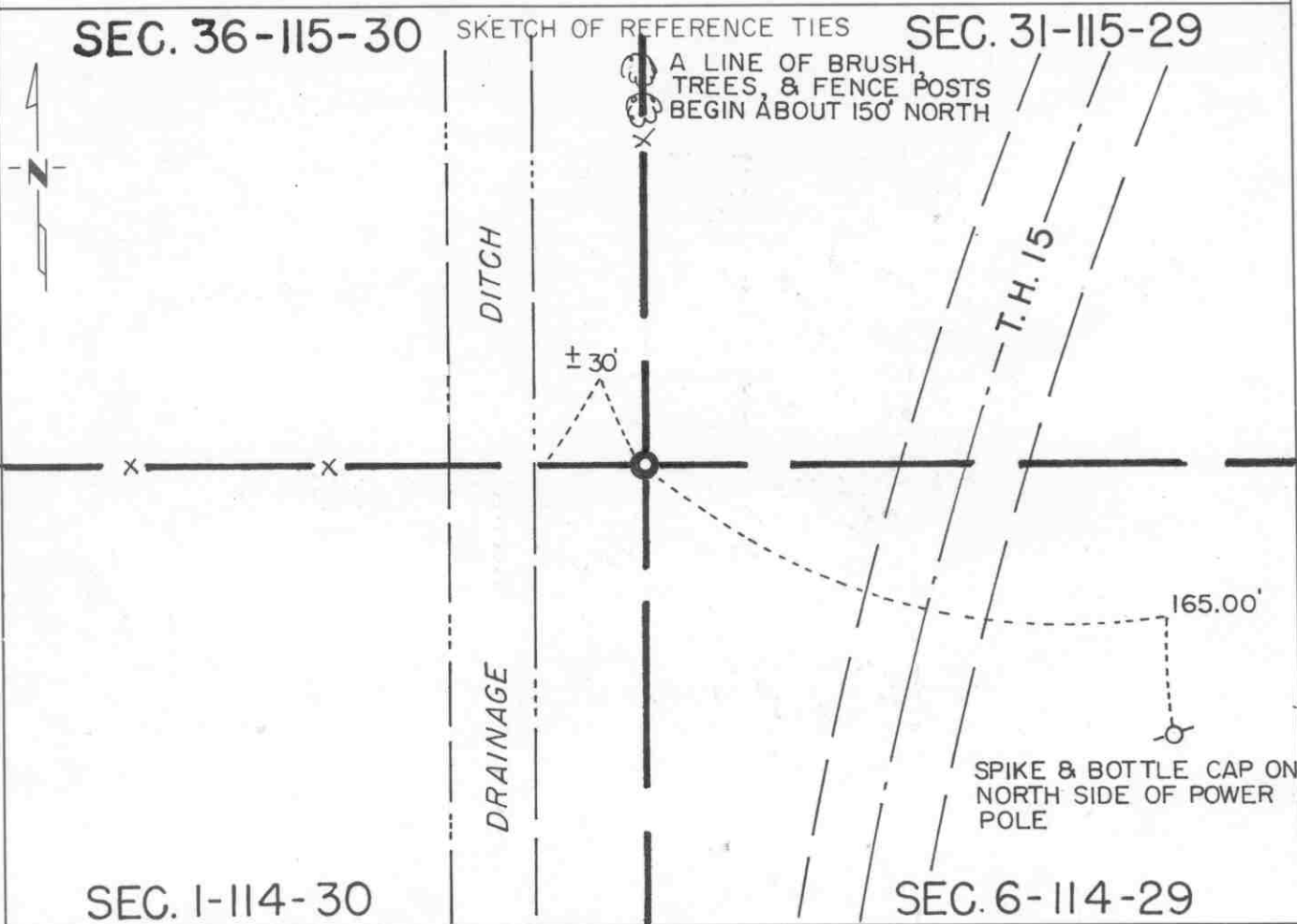
STATE OF MINNESOTA, County of McLeod

At the corner location shown on the sketch:

On June 13, 1991 found a cast iron monument at ground surface
DATE

left monument as found, lowered monument, removed monument (explain)

On _____ placed a _____
DATE



Statement of evidence relative to this corner location is on back of page.

I hereby certify that this document and the data contained herein was prepared by me or under my direct supervision.

Robert Jones 8-26-91
SIGNATURE DATE

Registration No. 11864

- Land Surveyor, Professional Engineer
- County Surveyor, County Engineer

OFFICE OF THE COUNTY RECORDER
County of McLeod

I hereby certify that this document was filed in the Co. Recorders office at 2 P. .M. on the 18th day of Sep .D., 1991

County Recorder Carmen Botchie

By _____, Deputy

DOCUMENT NO. 240996

Statement of Evidence:

Northeast Corner Section 1, T 114 N, R 30 W

- 1855 - The original Public Land Survey of the township line was completed by John Ryan. A wood post was set over a deposit of charcoal in a dirt mound. Trenches and pits were dug to build the mound. Osage orange was planted at the corners of the mound.
- 1896 - I. C. Christlieb, McLeod County Surveyor, set a 2 1/2" square iron monument to mark the corner.
- 1944 - The Minnesota Highway Department right of way map from this era shows the corner to be 13.5 feet west of P.O.S.T. 645+69.1.
- 1959 - Minnesota Highway Department survey notes show that a 2" square iron was found one foot below ground at the intersection of fence lines north and west. It was located 2702 feet southerly of T.H. 212 P.O.T. 1375+11.5.
- 1970 - Dickman Knutson, McLeod County Surveyor, found the 2 1/2" square iron monument and set a McLeod County cast iron monument.
- 1990 - A Mn/DOT survey crew recovered the cast iron monument and tied it into the McLeod County Coordinate System.
- 1991 - R. C. Jones, Registered Land Surveyor with Mn/DOT, found the cast iron monument at the ground surface.

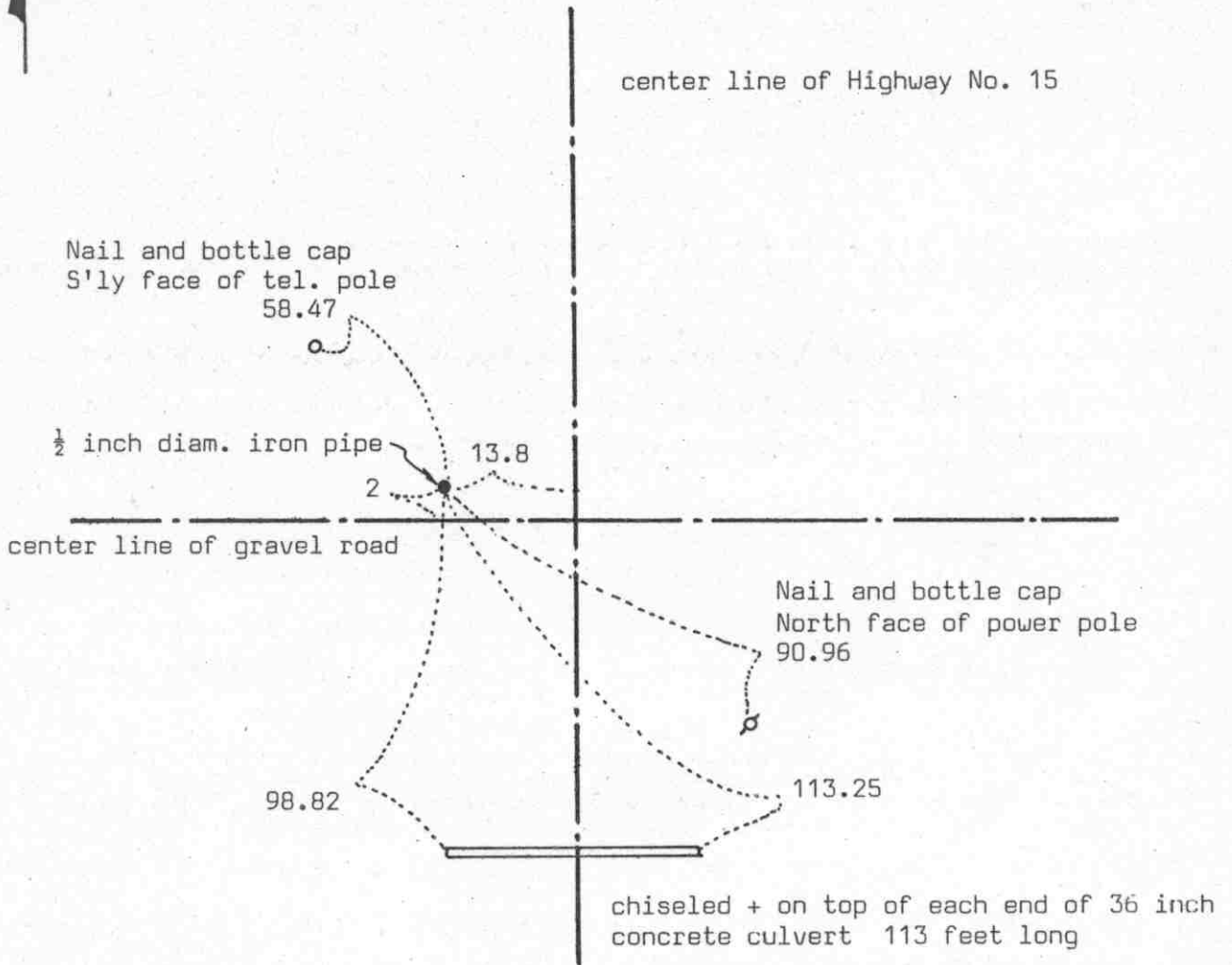
The cast iron monument is accepted as the corner location because it closely fits a field division to the west, it fits a fence line across T.H. 15 to the east, it is nearly in line with a line of small trees and brush to the north, it fits the location shown on the 1944 right of way map for T.H. 15 within 2 or 3 feet, and it is located 2701.00 feet southerly of T.H. 212 P.O.T. 1375+11.5, which fits the 1959 M.H.D. survey very well.

For additional information, contact the Mn/DOT Surveys Section at Willmar, Mn 56201.

Certificate of Location of Government Corner



SKETCH OF REFERENCE TIES
(NO SCALE)



Statement of evidence relative to this corner location on sheet 2

I hereby certify that this document was prepared by me or under my direct supervision.

Willard Pellinen

Willard Pellinen
McLeod County Surveyor
License No. 9626

Date 4/6/89

OFFICE OF THE COUNTY RECORDER
MCLEOD COUNTY, MINNESOTA.

I hereby certify that this document was filed in this office at 4 o'clock P..M. on the 20th day of April, 19 89.

Carmen Ostlie, County Recorder

By _____, Deputy

Document No. 227809

Certificate of Location of Government Corner

This corner was originally set by the government in 1855. John Ryan set a post at the north edge of a marsh, deposited charcoal, dug pit and trenches, built mound and planted osage orange seeds at corners of the mound.

In 1900, E.L.Higgins set the quarter corner on line and half way between section corners.

Highway notes show they found an iron stake under a field stone 13.8 feet left of P.O.T. 616+88.0.

In 1970, McCombs Knutson Associates (Dickman Knutson, County Surveyor) set a PK nail 13.8 feet west of P.O.T. station 616+88.0 as shown on the highway right of way map. They used highway reference ties to center line station 616+88.0.

On November 13, 1983, we found nothing at the corner, highway has been resurfaced. We set the corner (a $\frac{1}{2}$ inch iron pipe) using 1970 reference ties.

On January 31, 1989, we found a PK nail at the corner, reference ties still good.